

## CLIENT ASSOCIATIONS

### **National, State, and Local Governments**

U.S Army Corps of Engineers  
U.S. Department of Justice  
U.S. Environmental Protection Agency  
U.S. Bureau of Mines  
U.S. Department of the Interior  
U.S. Fish and Wildlife Service  
U.S. Geological Survey  
PA Department of Transportation  
PA Department of Environmental Resources  
West Virginia Department of Tax and Revenue  
Adams County  
Greene County, PA  
Huntington County, PA  
Lebanon County, PA  
Schuylkill County, PA  
Fayette County, PA  
Centre County, PA

### **Banking Institutions**

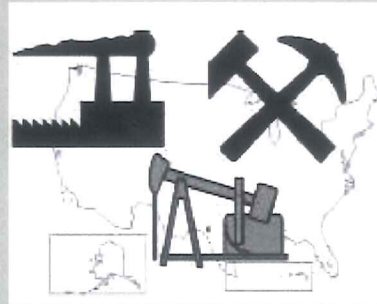
Wilmington Trust  
Bank of America  
Wachovia Bank  
Fifth Third Bank  
PNC Bank  
M&T Bank  
Barclay's  
Bank of Seoul  
Comerica, Inc

### **Corporations**

Vulcan Materials  
Consolidation Coal  
Glenn O. Hawbaker, Inc  
LaFarge Canada, Inc  
Beltrami Enterprises  
Victor Oolitic  
H&K Materials  
Glasgow Inc  
Highway Materials  
Fisher Mining  
Blaschak Coal  
Blue Coal  
Raymond Colliery

*"We have had the opportunity to work with RTC since the 1980's. Their work is not only timely, but accurate. They exceeded our expectations for quality. This is the best firm to work with in an assessment appraisal work."*

H. John Frazier, CPE,  
Chief Assessor, Greene County PA



Contact us at  
**814 237 4009**

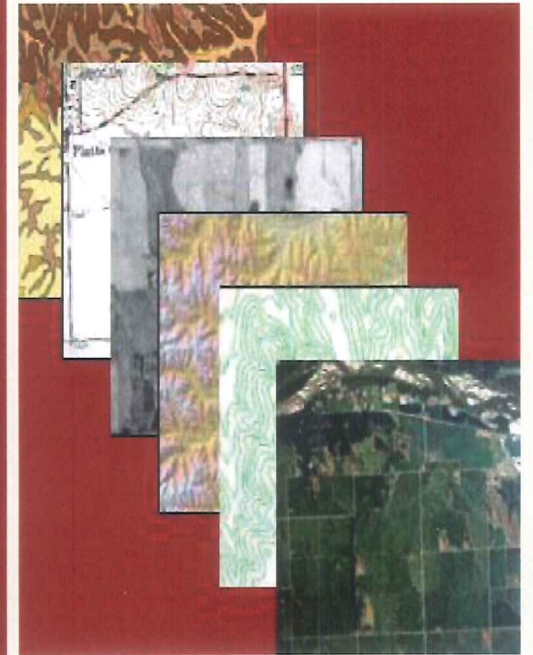
Or visit us on the web at  
**www.resourcetec.com**

Resource Technologies Corporation  
PO Box 242  
State College, PA 16804

Phone | 814.237.4009  
Fax | 814.237.1769

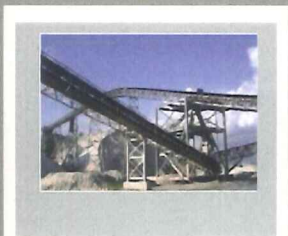
www.resourcetec.com

# RESOURCE TECHNOLOGIES CORPORATION



- Appraisal and Assessment •
- Geotechnical Analysis •
- Planning and Management Systems •
- Geographic Information Systems •
- Environmental Analysis •





AGGREGATE



COAL

OIL AND GAS



INDUSTRIAL



Please see one of our industry-specific inserts or contact our offices for more information and a rapid-response quote.

*Practical Solutions for the Information Age*

### Who We Are:

Resource Technologies Corporation is an independent research, development, and technical services firm located in Central Pennsylvania. We specialize in multi-disciplinary programs designed to answer our individual client's requirements. The diverse technical disciplines that RTC personnel represent include:

Aerial photo interpretation  
Appraisal and Assessment  
Cartography  
Ecology  
Environmental Site Assessment  
Geographic Information Systems  
Geography  
Geology  
Industrial Appraisals  
Land and Mineral Appraisals  
Mass Assessment  
Mineral Economics  
Mining and Reclamation  
Natural Resource Analysis  
Planning  
Systems Analysis

### What We Do:

*RTC approaches projects with a progressive, multi-disciplined program designed to answer the individual client's requirements. Based on the needs of the client, RTC will develop a research, analysis, and assessment process to suit each unique situation. For over thirty years, RTC has been pleased to offer the following programs and services to our clients:*

- Abandoned mine land analysis
- Aerial Reconnaissance/Image interpretation
- Business Appraisals
- Digital mapping and analysis
- Environmental hazard analysis and mitigation/recovery program design
- Environmental impact and ecological analysis
- Environmental site assessments
- Flood hazard mapping
- GIS development
- Geologic and mining hazard analysis
- Highway corridor analysis
- Industrial site studies
- Land resource and land capability mapping
- Litigation support
- Mass assessment services
- Mineral, gas, and oil reserve and production analysis, valuation, and appraisal
- Mineral property permit applications
- Non-point pollution source inventories
- Real estate appraisal services
- Regulatory and management program design
- Waste disposal site inventories, analysis, and permitting
- Wetlands mapping and analysis